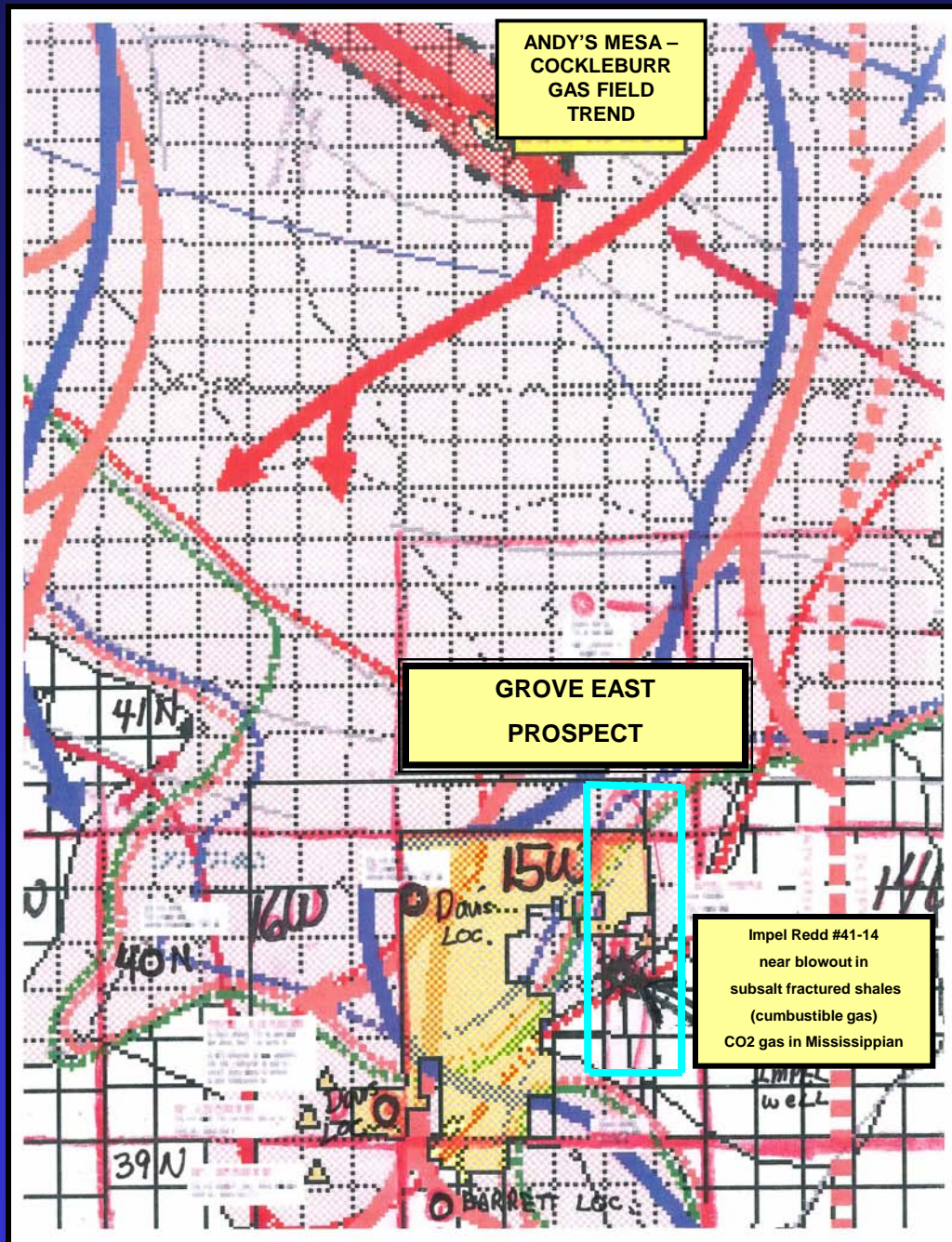


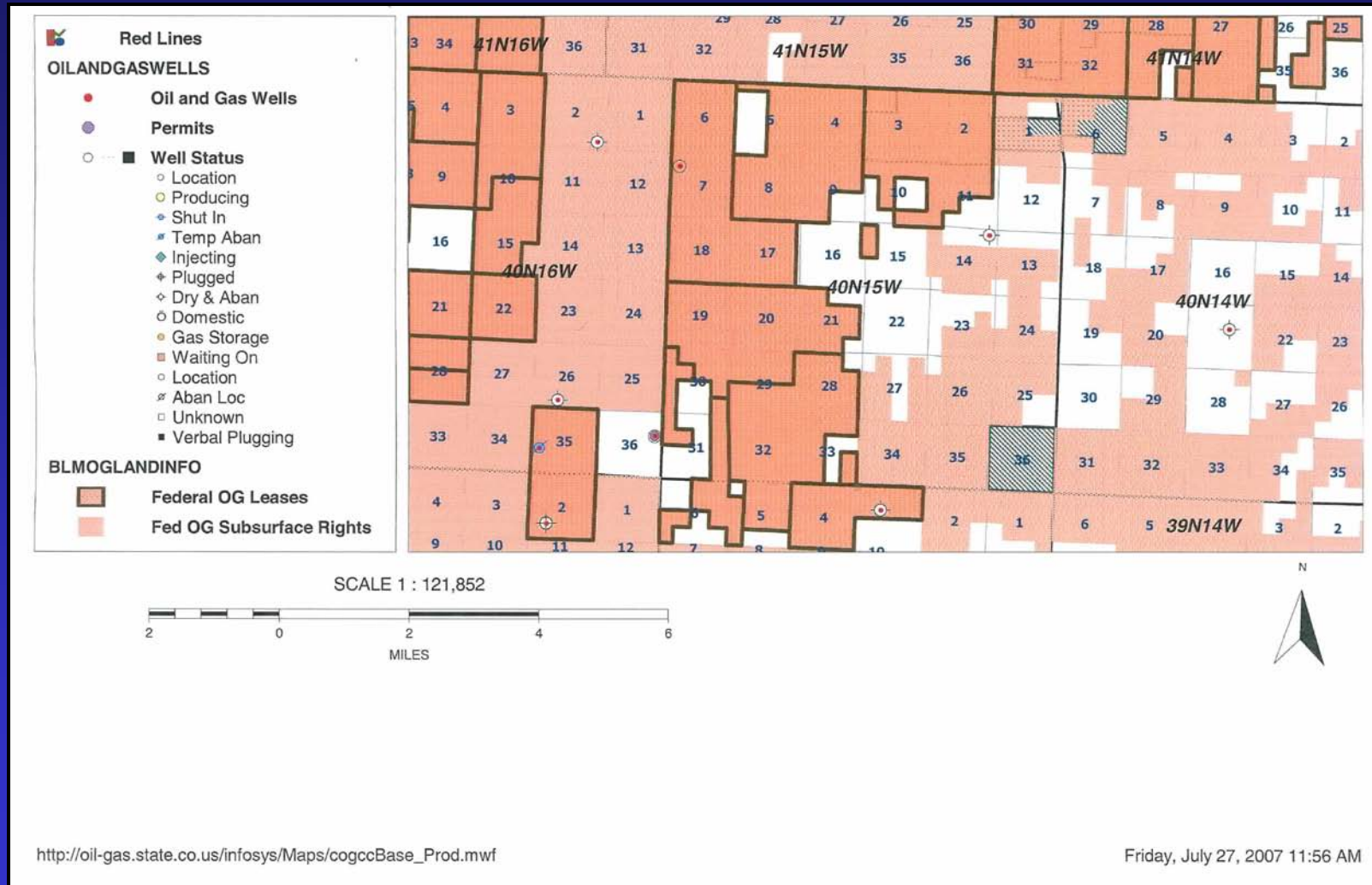
**ARKANOVA ENERGY CORP.
GROVE EAST PROSPECT
PARADOX BASIN
DOLORES COUNTY, COLORADO**



Index Map with Acreage, Shows, Fields, and Proposed Wells

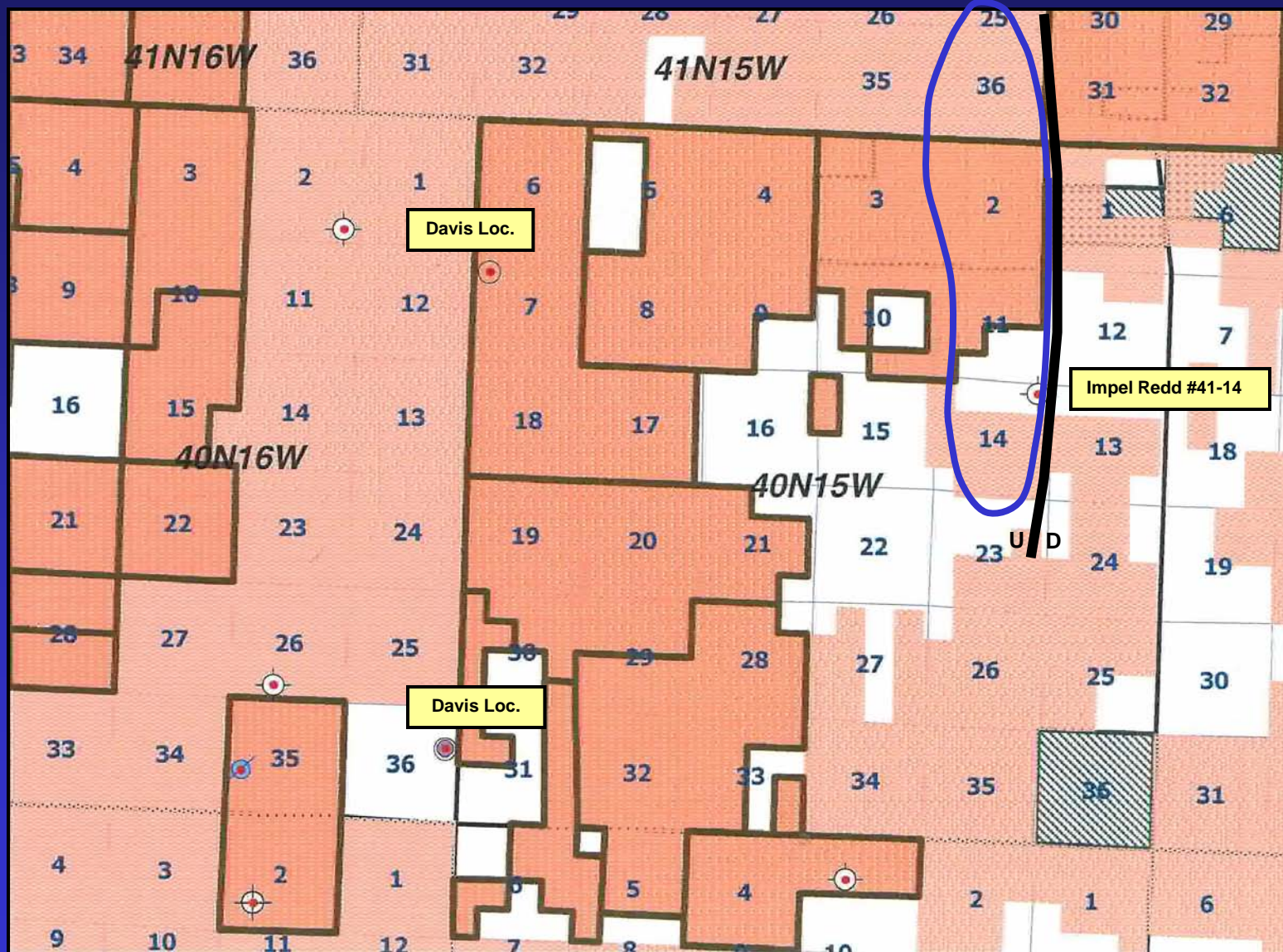


Federal OG Lease Status and Mineral Ownership

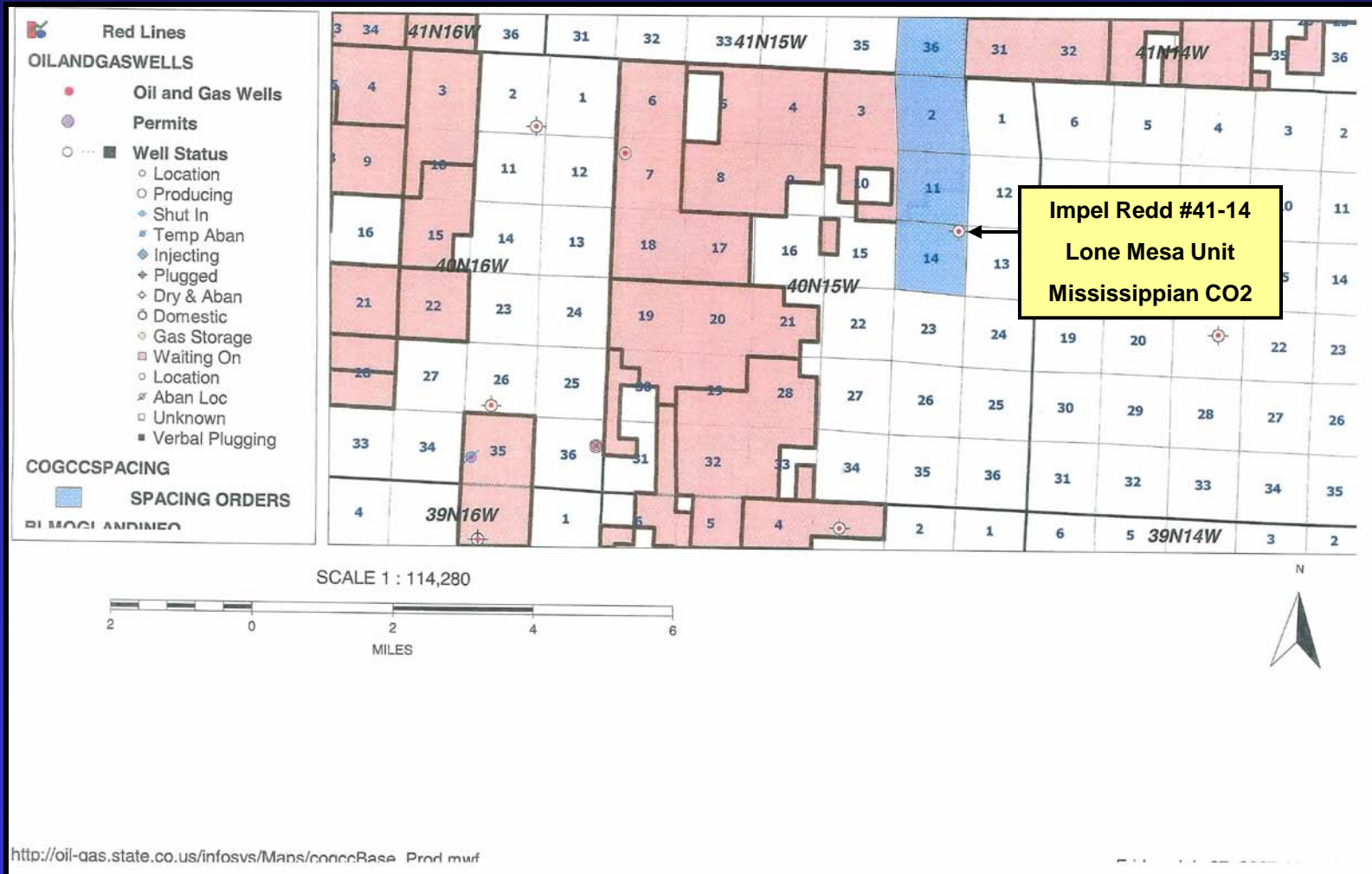


SUB-PARADOX SALT STRUCTURAL CLOSURE

(overpressured, fractured black shale immediately below base of salt)



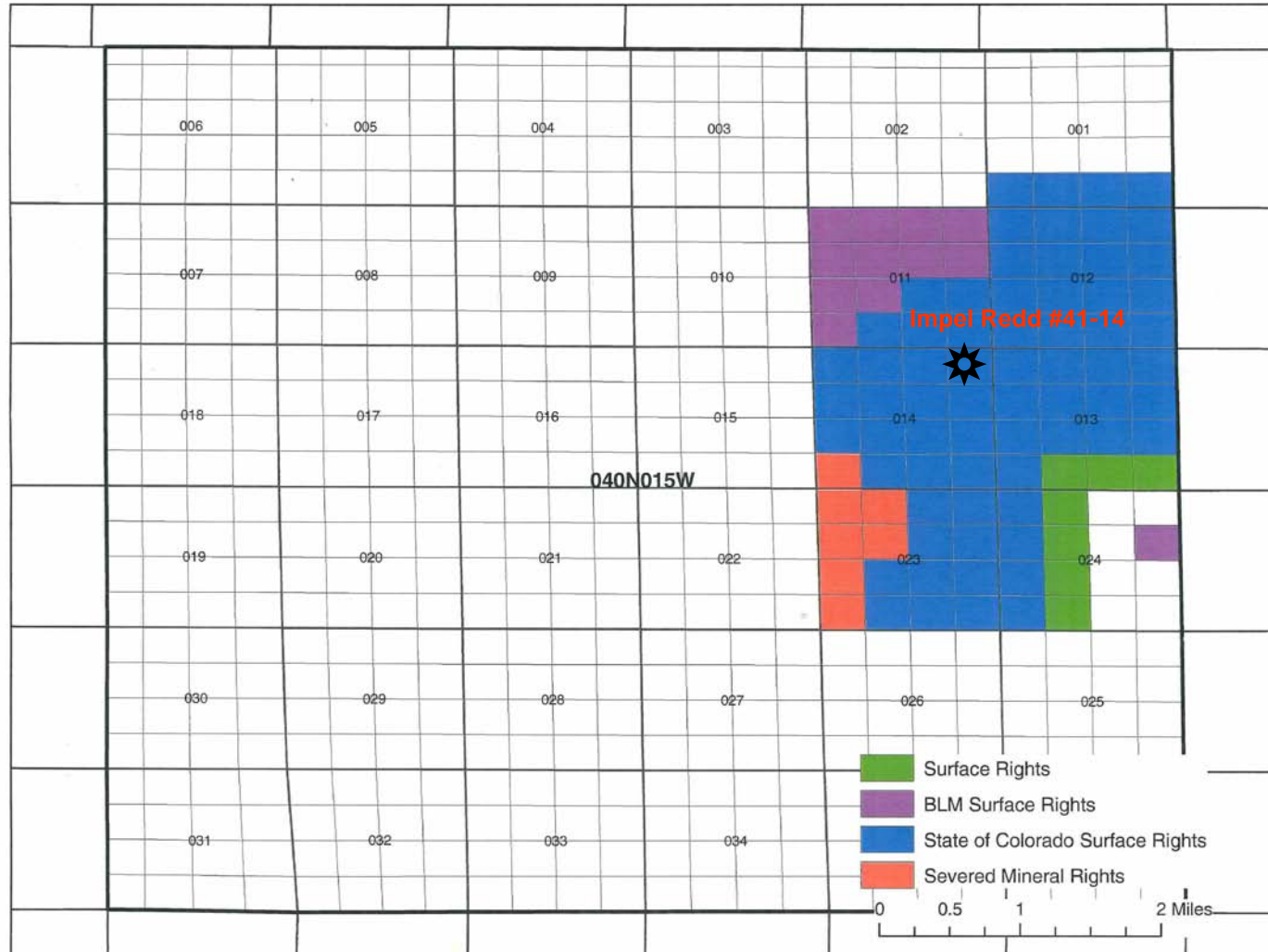
Existing Federal Leases & Areas with Spacing Orders (COGCC)



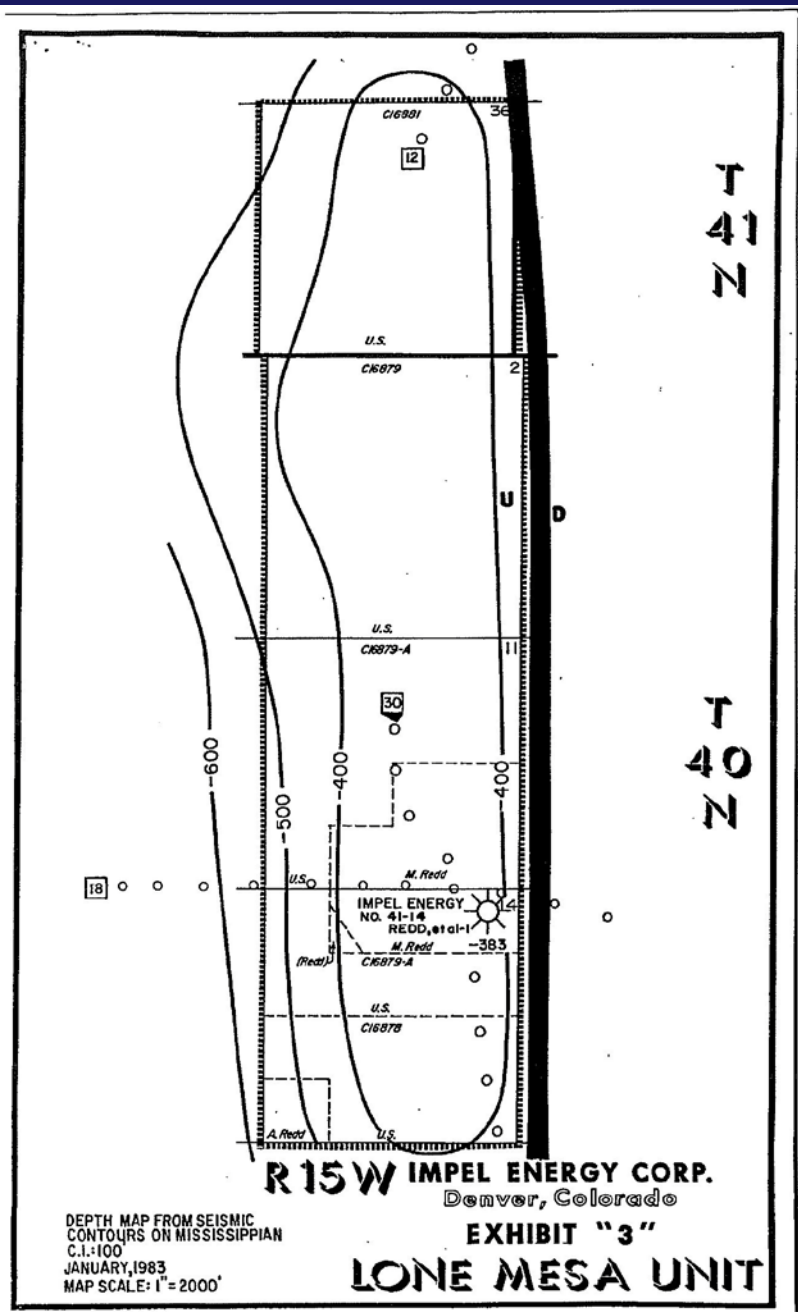
http://oil-gas.state.co.us/info/svs/Mans/coGCCBase_Prod.mwf



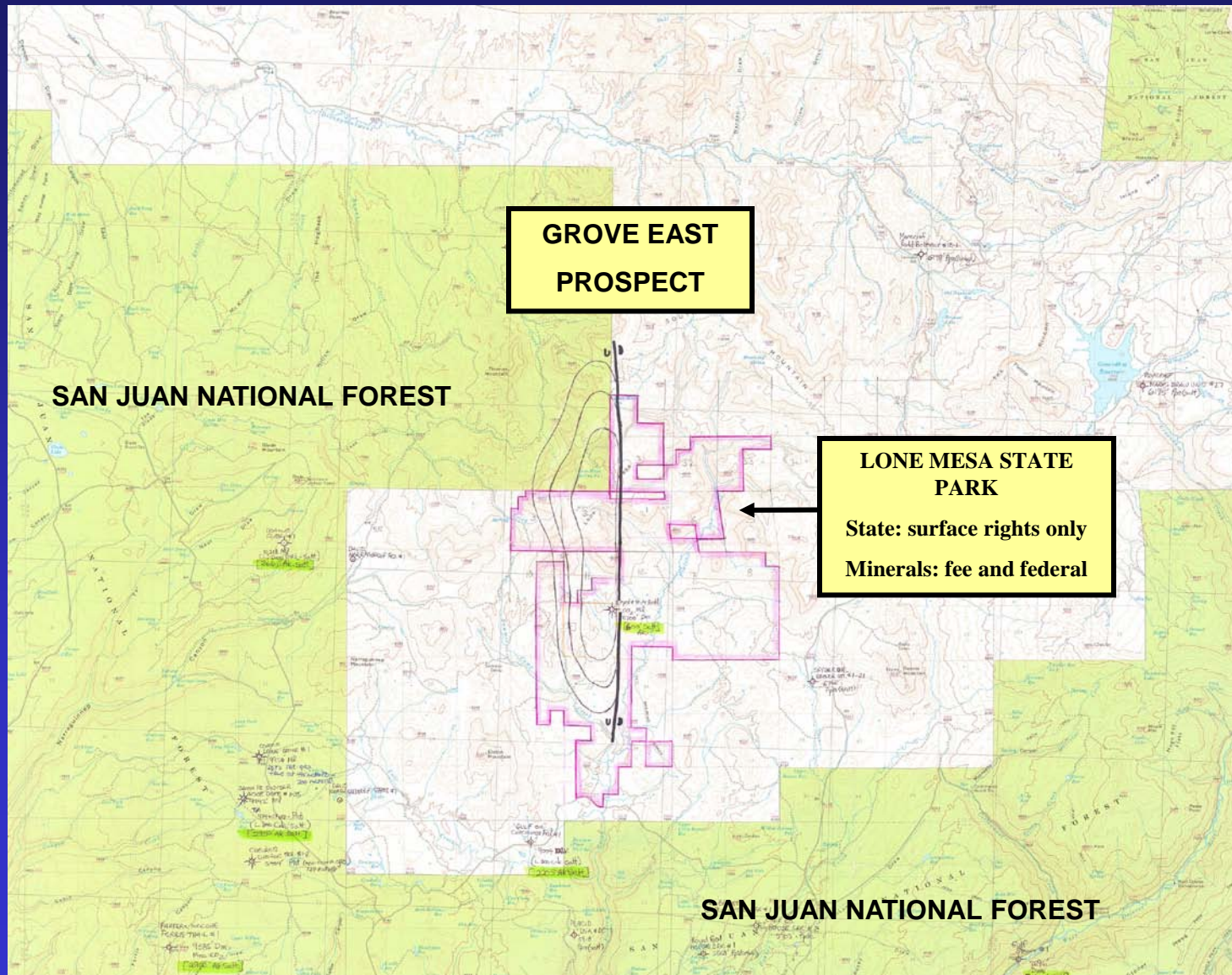
Surface Rights in Area of Mississippian Structure



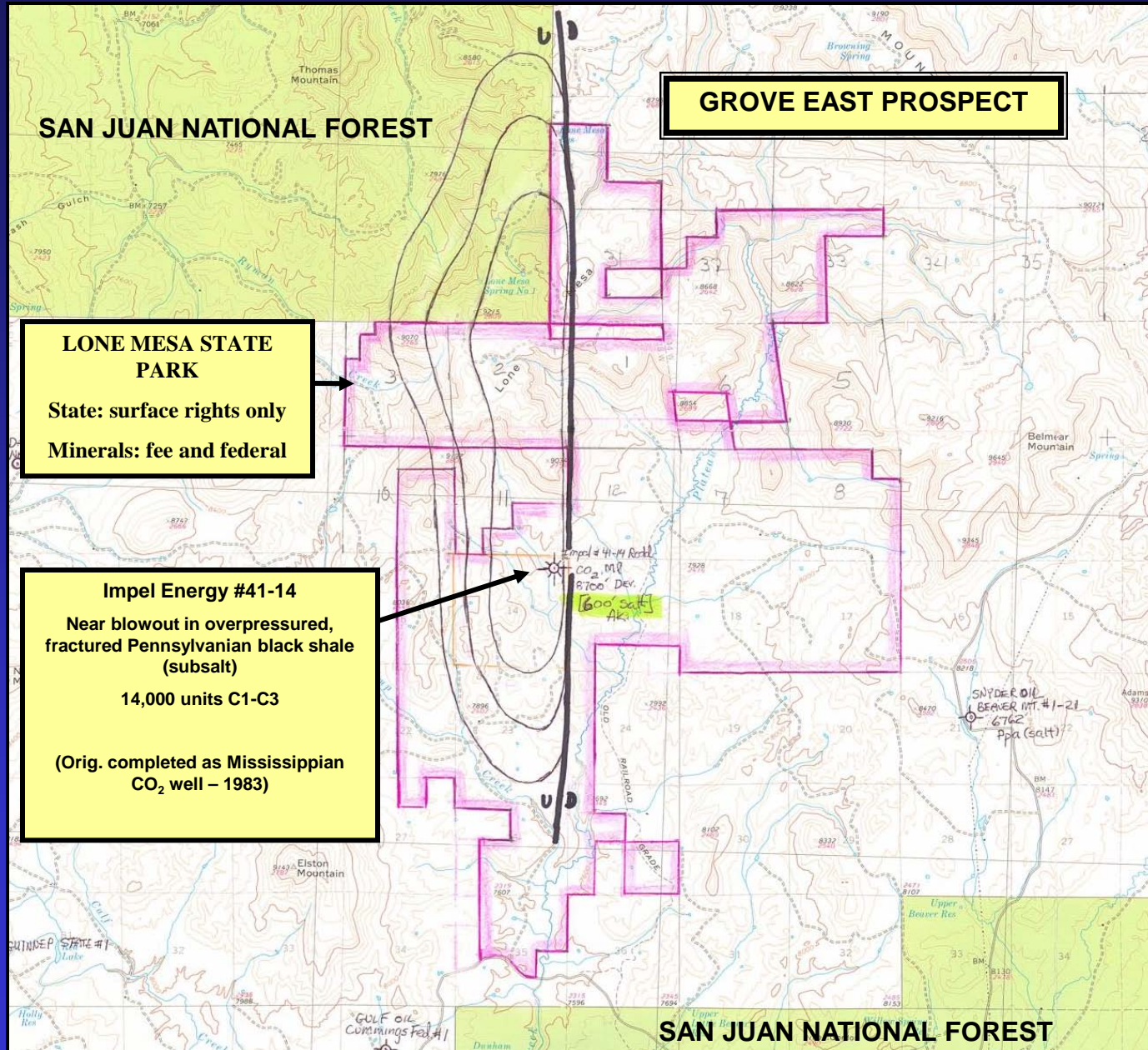
Missippian Leadville Structure (CO₂ Reservoir)



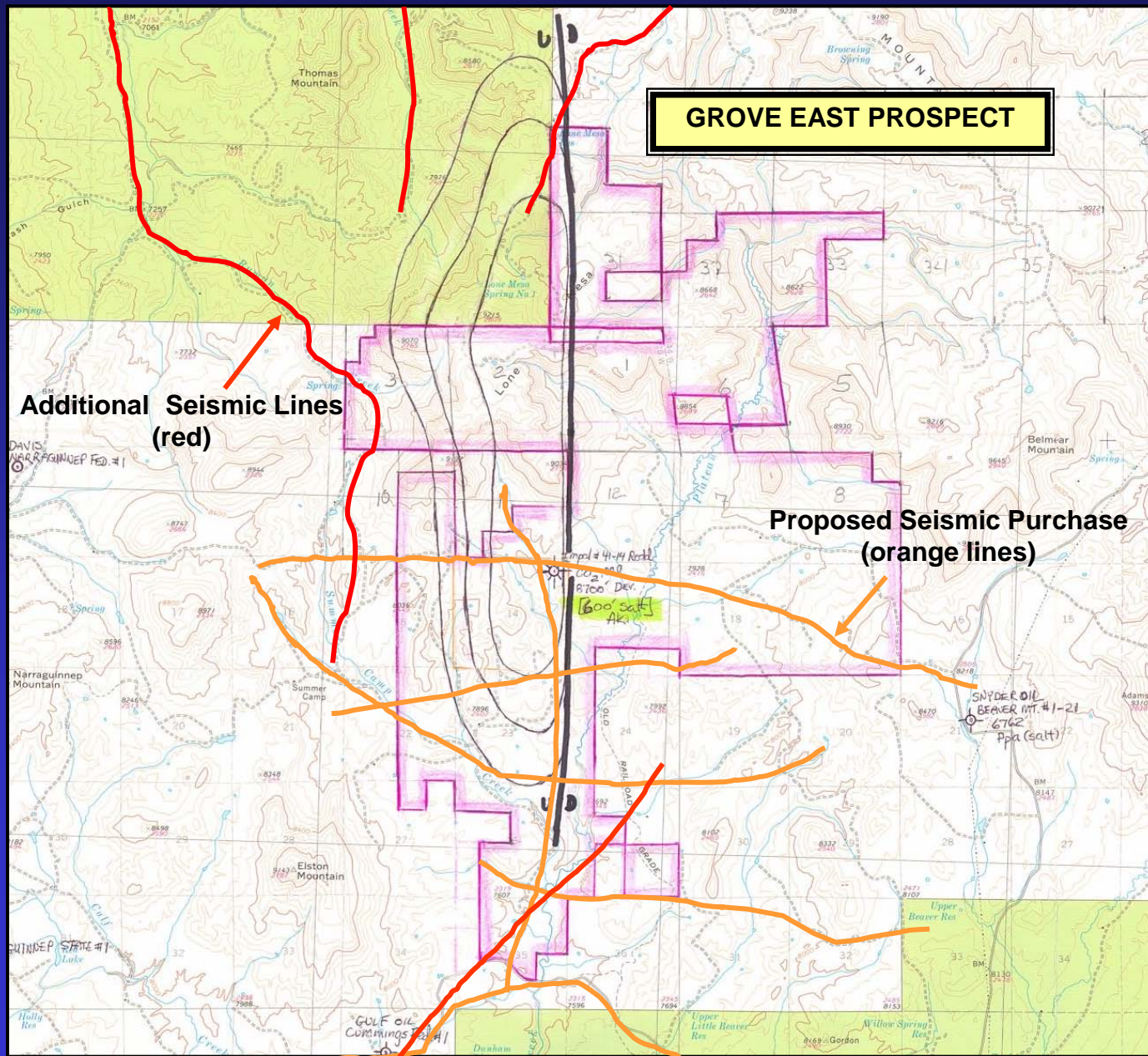
Topographic Map with Geologic Structure formline contours on top of Miss. Leadville Fm. (230 ft. below primary target shale)



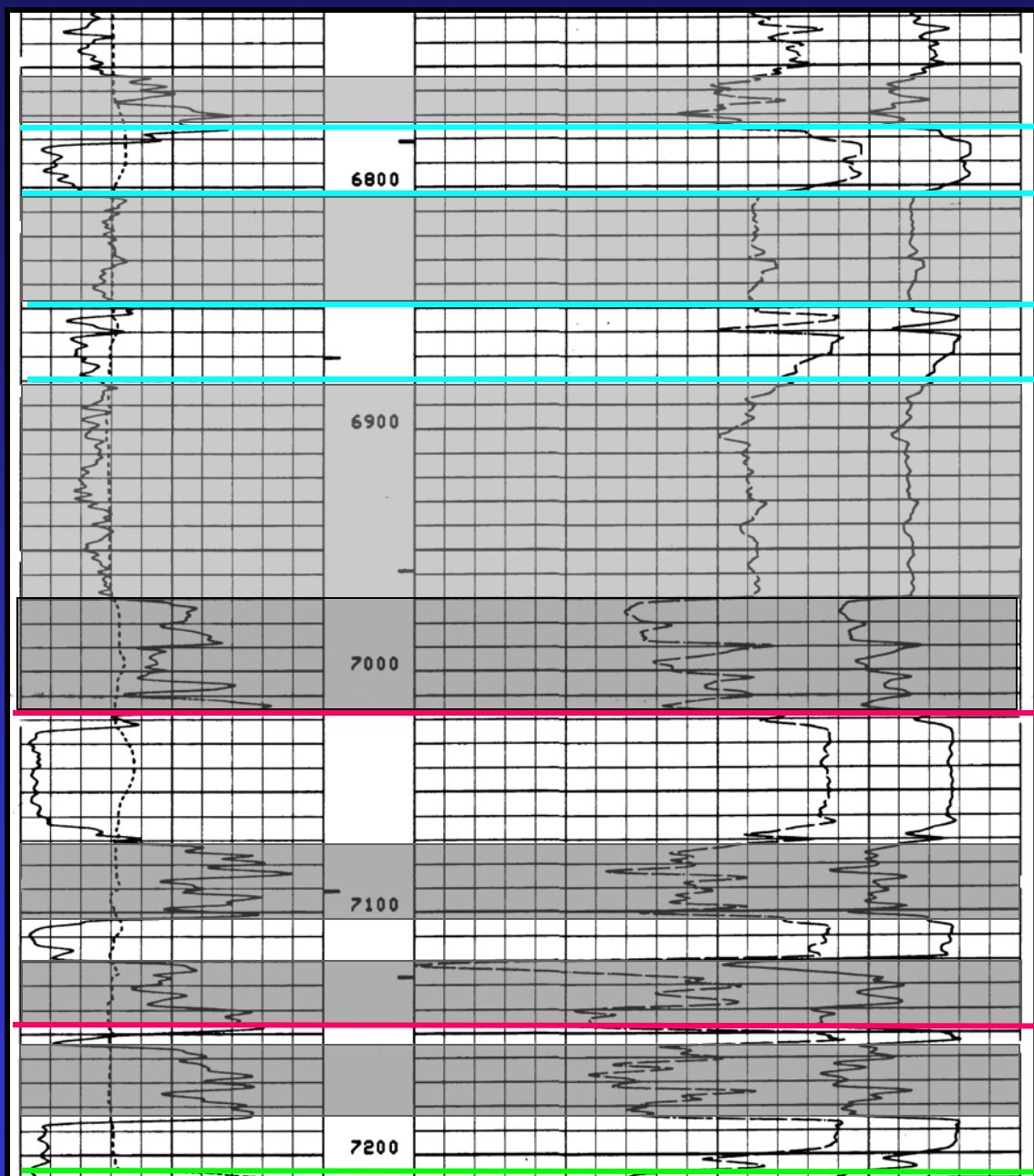
Detailed Topography & Geologic Structure



Mississippian Structure and Seismic Coverage



Redd #41-14 Well Ismay – Desert Creek Interval



Upper Ismay Carbonate

Hovenweep Shale

Lower Ismay Carbonate

Gothic Shale

Desert Creek

Middle Desert Creek Shale

Chimney Rock Shale

Akah

Top Salt



75 u. C₁-C₄



Trip Gas:
432 u. C₁-C₄



Trip Gas:
200 u. C₁-C₄

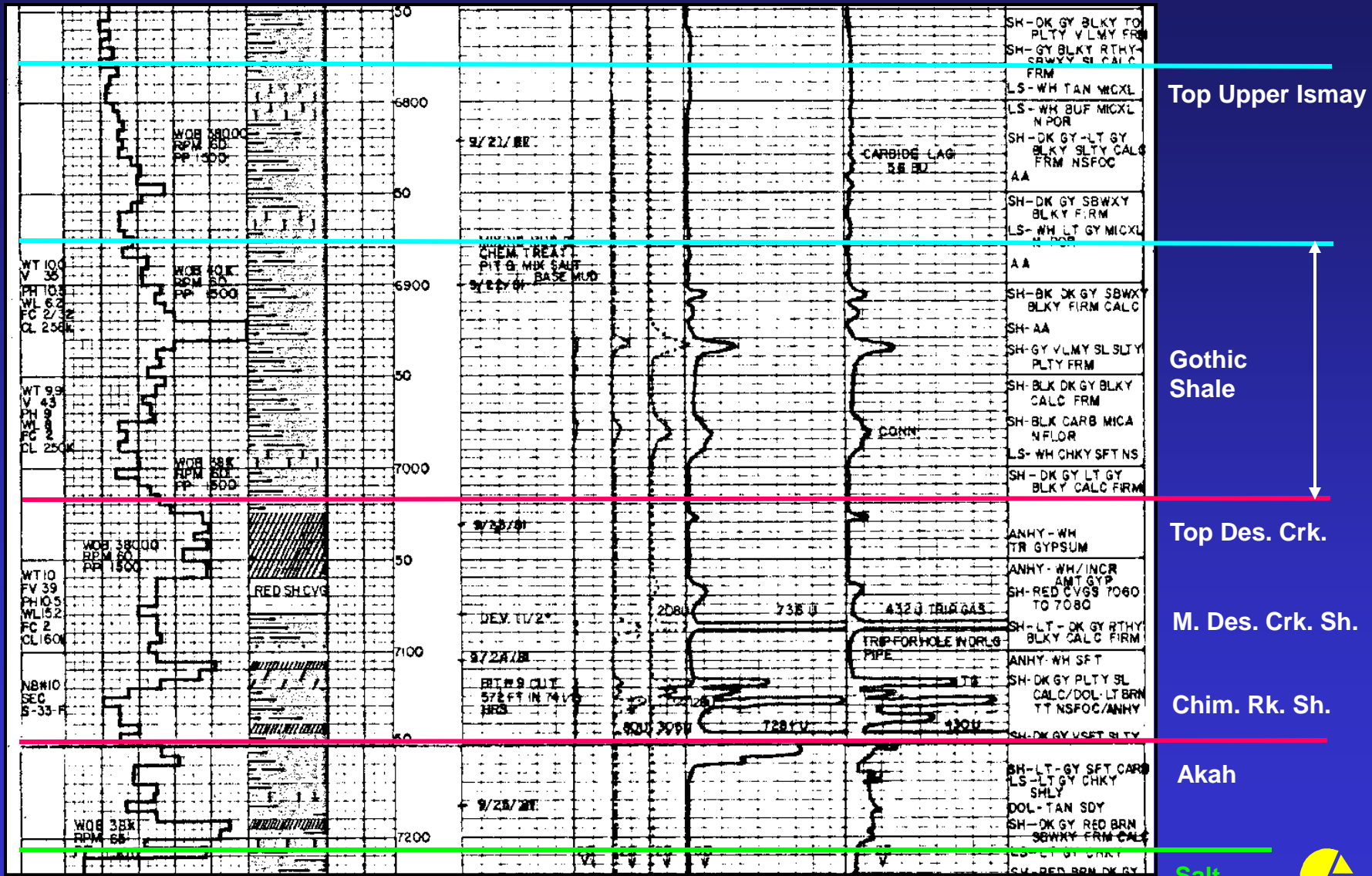


Trip Gas:
430 u. C₁-C₄



Redd #41-14 Well

Ismay – Desert Creek Fractured Shale Intervals Mudlog



Top Upper Ismay

Gothic Shale

Top Des. Crk.

M. Des. Crk. Sh.

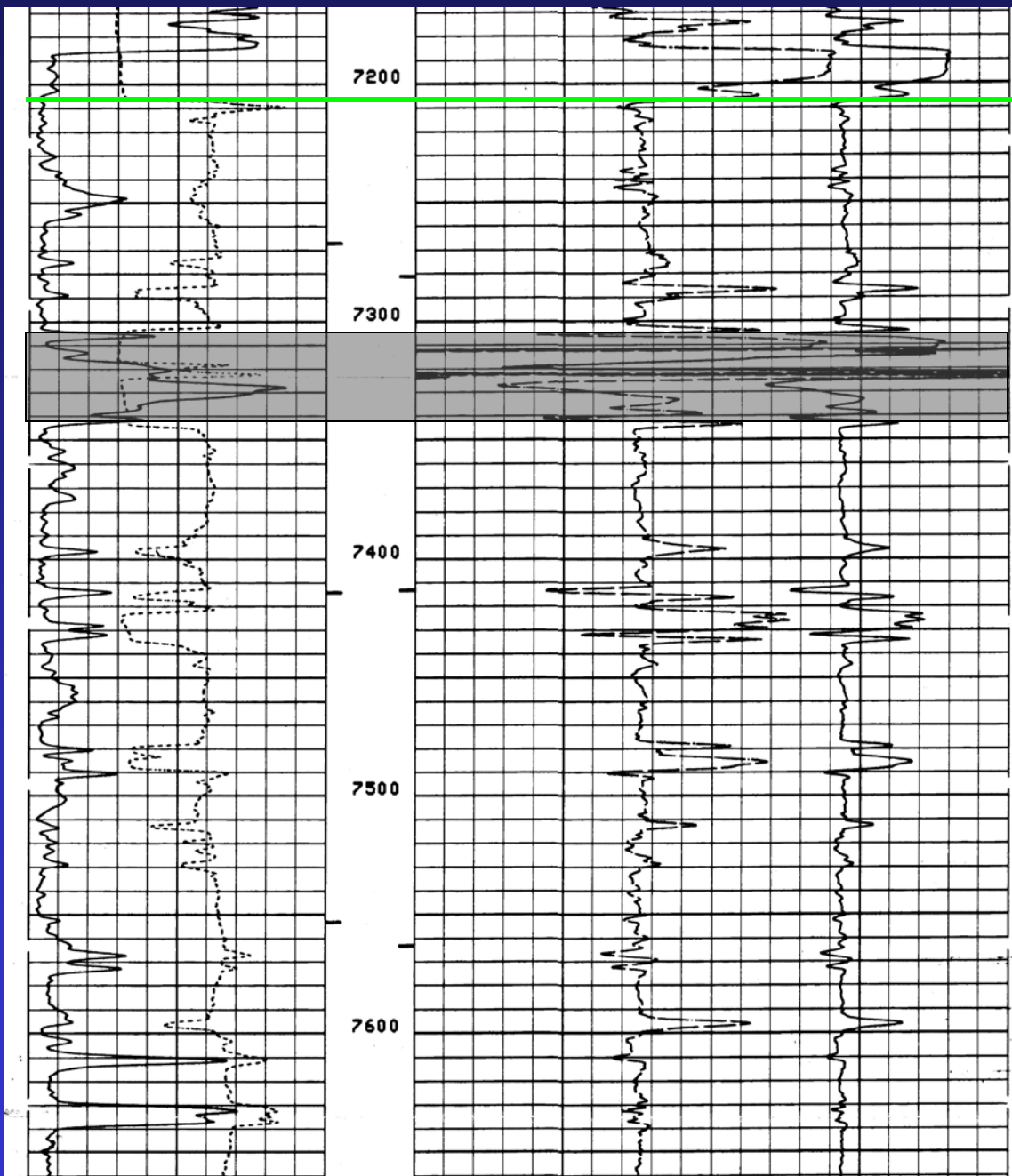
Chim. Rk. Sh.

Akah

Salt



Redd #41-14 Well Paradox Salt Interval (Upper Portion)



Top Salt



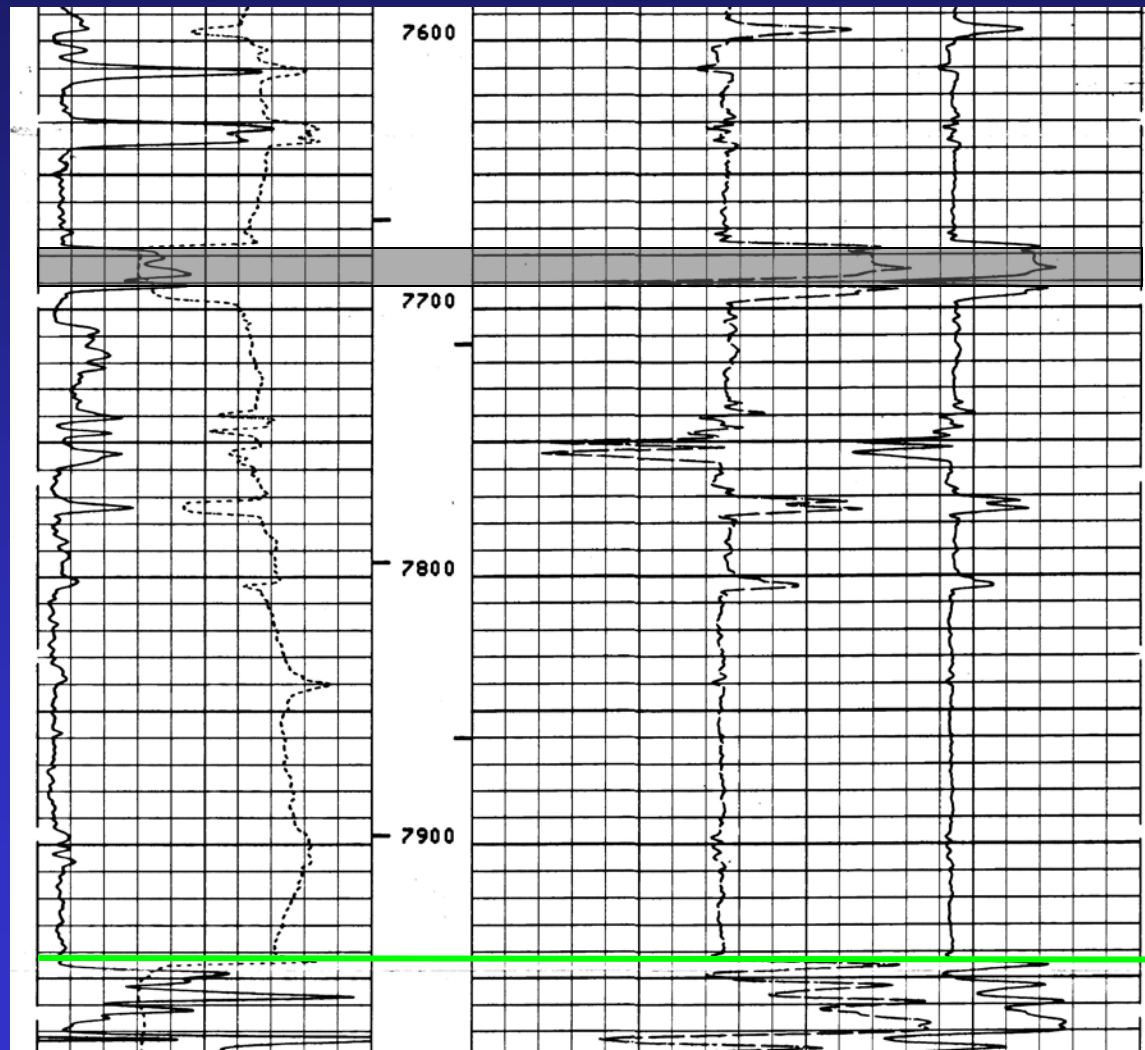
400 u. show

C₁ tr. C₂-C₄

Trip gas: 4000 u.



Redd #41-14 Well Paradox Salt Interval (Lower Portion)

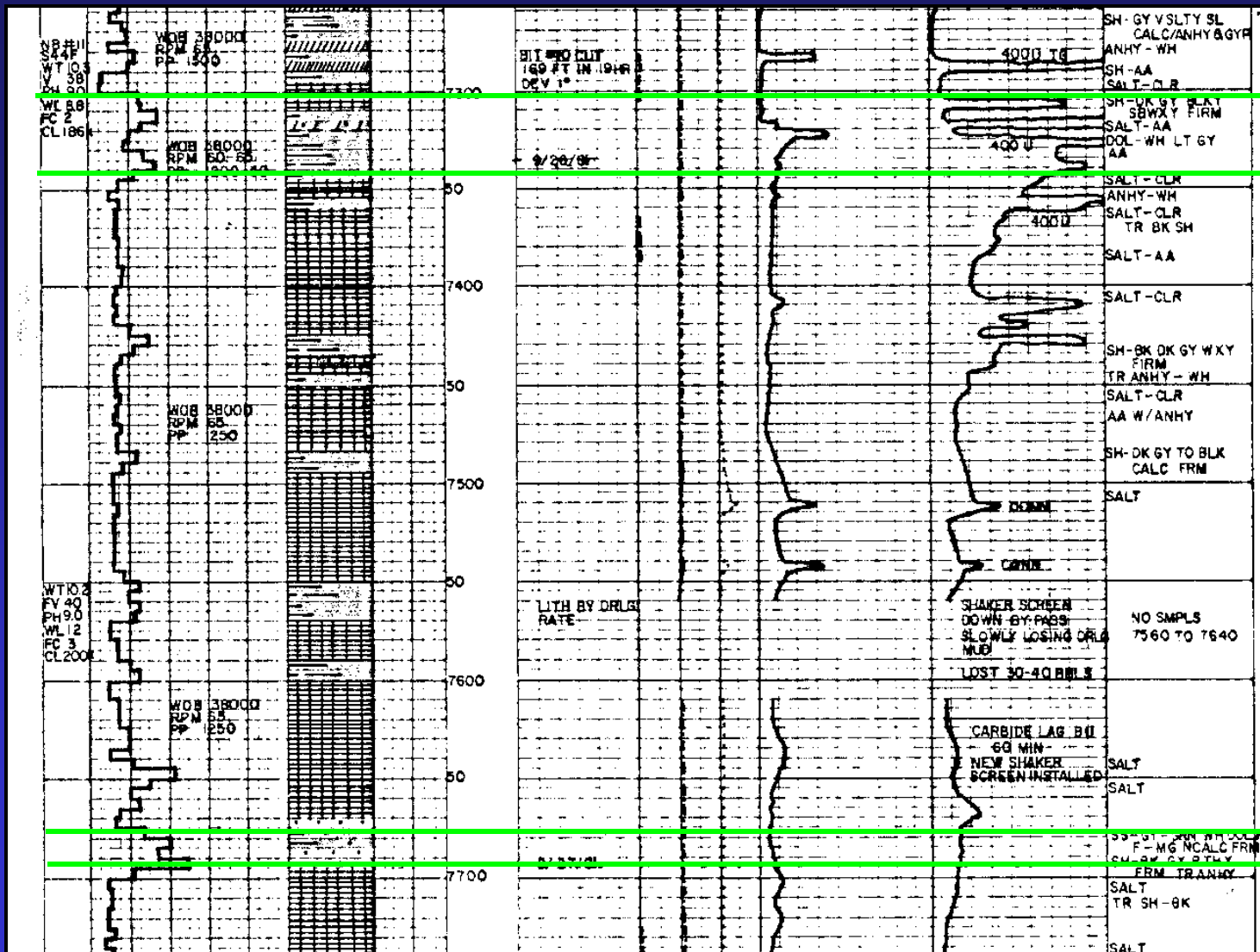


60 u. show
C₁-C₃

Base Salt



Redd #41-14 Well Subsalt Fractured Shale Interval Mudlog



Shale

Shale



Redd #41-14 Well Subsalt Interval

Base Salt

MAIN TARGET
Overpressured
Fractured Shale
(partial blowout)



14,000 u. show
C₁ tr. C₂-C₃
28,000+ u. C₁
(chromatograph)

Calc. Pressure
grad: 0.57 psi / ft.

Mississippian Leadville Limestone
(CO₂)



Redd #41-14 Well Subsalt Fractured Shale Interval Mudlog

